

SHORT TERM IT JOB TRENDS

- Georgia ●
- Atlanta Metro ●
- National ▲

For IT job seekers in Georgia the year began with another reduction of job opportunities. Employers posted a daily average of 2,560 job openings, 8.6% fewer than in December.

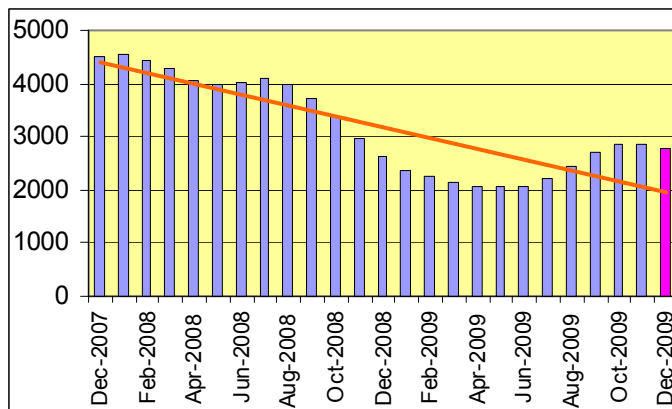
Among the major industry sectors only Defense showed an up-tick in demand. Employers are mulling whether to hire more staff after adding some positions in the fall of 2009. Even though the US economy grew during the third and fourth quarter of 2009, employers seem to be not convinced that a full recovery is on the way.

Table 1: IT Job Openings, Georgia*

Jan 10	Dec 09	Nov 09	Jan 09	Jan 08
2,560	2,800	2,870	2,330	4,540

A drop in job postings was also observed in Florida (down 7.7%) and South Carolina (down 5.6%). Only the IT job market in Alabama, the smallest one in the south east, continued to grow (up 14.7%). Demand at the national level declined 7.1%.

Fig.1: IT Open Positions, Georgia*



Demand for all occupational groups declined. Least affected were IT professionals in Systems Engineering / Support where the daily average of job postings declined 2.6%.

Table 1: IT Job Opening Estimates by Category*

	Jan 10	Jan 09
Total IT Job Market	2560	2330
Systems Eng./Support	740	700
Software Development	420	430
IT Architects/Consultants	380	280
IT Management	370	280
IT Sales and Marketing	230	170
Systems Administration	160	160
Business/Process Design	80	100
Training/Tech Writing	50	80
Hardware Engineering	0	20
Misc.IT Job Categories	130	120

Table 2: Top 15 Needed Skills (Job Openings*)


	Jan 10	Jan 09
Windows OS	590	490
C++/VC++	440	320
SQL	400	460
Java	370	310
Unix	370	270
Oracle DBMS	340	290
Linux	310	200
Microsoft SQL Server	290	330
Business Analysis	230	210
OO (analysis / design / programming)	180	190
Web Services	170	120
C#	160	130
Windows NT/2000/2003 Server	160	190
HTML	140	190
JavaScript	140	110

*) Estimated monthly averages are based on actual count of job openings.

METHODOLOGY

SkillPROOF surveys the inventories of job openings at large, regional and nationwide direct employers. Job openings are counted and verified every 24 hours. All data sources have been verified for timely removal of filled or closed positions. No data from job boards or search firms are included.

For this report SkillPROOF estimates the counts of job openings. Estimates are calculated directly from SkillPROOF's actual daily counts of job openings. As a base for its calculations, SkillPROOF uses data and findings from reports of the Bureau of Labor Statistics (BLS) <http://www.bls.gov>.



Technology Association of Georgia, Inc.
75 Fifth Street NW, Suite 310 - Atlanta, GA 30308
phone: 404-817-3333 - fax: 404-817-6677
web: <http://www.tagonline.org>



Information on this page is provided by
SkillPROOF Inc.
510 Barnum Ave., Suite 402, Bridgeport, CT 06608
phone: (917) 463 - 3941 - fax: (815) 642 - 8694
web: <http://www.skillproof.com>