

**SHORT  
TERM  
IT JOB  
TRENDS**

**Georgia**   ▲  
**Atlanta Metro**   ▲  
**National**   ▲

There is some positive news for IT job seekers in Georgia. Despite the mixed economic outlook and the traditionally slow summer season employers keep adding new opportunities to

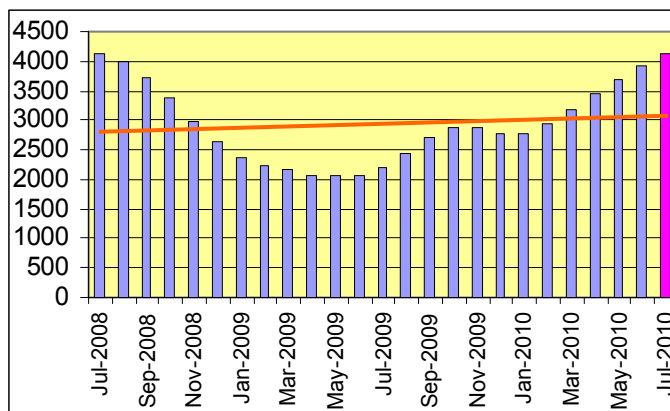
their lists of job postings. Job seekers found a daily average of 4,080 job postings online. This is 4.9% more than in June. Employers in HiTech, Defense and Financial Services are in the IT job market with growing interest.

**Table 1: IT Job Openings, Georgia\***

Jul 10	Jun 10	May 10	Jul 09	Jul 08
4,080	3,890	3,710	2,040	4,120

Last month, demand for more IT professionals grew twice the rate of the national average. With this development Georgia is in better shape than most other states. At the national level the IT job market expanded on average 2.6% compared to June reflecting the sluggish recovery of the economy as well as vacation time.

**Fig.1: IT Open Positions, Georgia\***



From the main IT occupations, relative growth was highest for IT Sales and Marketing (up 14.0%) followed by Software Development (up 12.3%) and Systems Engineering / Support (up 7.8%).

**Table 1: IT Job Opening Estimates by Category\***

	Jul 10	Jul 09
<b>Total IT Job Market</b>	<b>4080</b>	<b>2040</b>
Systems Eng./Support	970	520
IT Architects/Consultants	700	340
IT Management	670	250
Software Development	640	410
IT Sales and Marketing	490	170
Systems Administration	250	160
Business/Process Design	140	80
Training/Tech Writing	70	40
Hardware Engineering	30	10
Misc.IT Job Categories	140	60

**Table 2: Top 15 Needed Skills (Job Openings\*)**

	Jul 10	Jul 09
Windows OS	710	360
C++/VC++	650	320
Oracle DBMS	650	310
SQL	560	330
Java	530	320
Linux	520	240
Unix	490	240
Microsoft SQL Server	370	200
Business Analysis	340	170
HTML	260	170
XML	250	100
OO (analysis / design / programming)	230	210
C#	220	130
SAP	200	90
JavaScript	200	120

\*) Estimated monthly averages are based on actual count of job openings.

**METHODOLOGY**

SkillPROOF surveys the inventories of job openings at large, regional and nationwide direct employers. Job openings are counted and verified every 24 hours. All data sources have been verified for timely removal of filled or closed positions. No data from job boards or search firms are included.

For this report SkillPROOF estimates the counts of job openings. Estimates are calculated directly from SkillPROOF's actual daily counts of job openings. As a base for its calculations, SkillPROOF uses data and findings from reports of the Bureau of Labor Statistics (BLS) <http://www.bls.gov>.



**Technology Association of Georgia, Inc.**  
75 Fifth Street NW, Suite 625 - Atlanta, GA 30308  
phone: 404-817-3333 - fax: 404-817-6677  
web: <http://www.tagonline.org>



Information on this page is provided by

**SkillPROOF Inc.**

510 Barnum Ave., Suite 402, Bridgeport, CT 06608  
phone: (917) 463 - 3941 - fax: (815) 642 - 8694  
web: <http://www.skillproof.com>